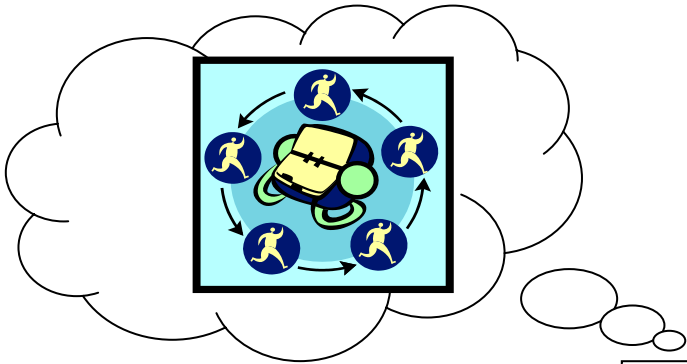


**Presbytery Networks  
Application Process**  


---

**For Endorsement  
(and Funding, if needed)**  
 Presbytery of Cincinnati

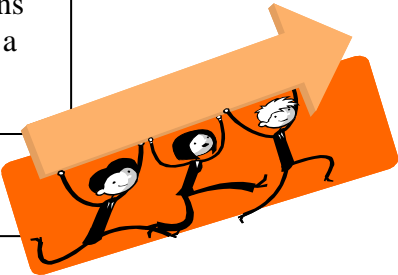


**A NETWORK IS -**  
 A self-identified group of persons who have common interests or concerns, which forms for mutual support and/or to pursue or advocate for ministry or mission.

Great idea for a Presbytery Network

Group of two or more persons from congregations in the Presbytery develop a proposal for a Network

Complete Network application and submit



Presbytery-wide Mission Team (PMT) of Council

Requests for more information or changes or meeting with PMT

Refer back to PMT for additional work and consultation with applicants

Recommendation – to approve or not approve

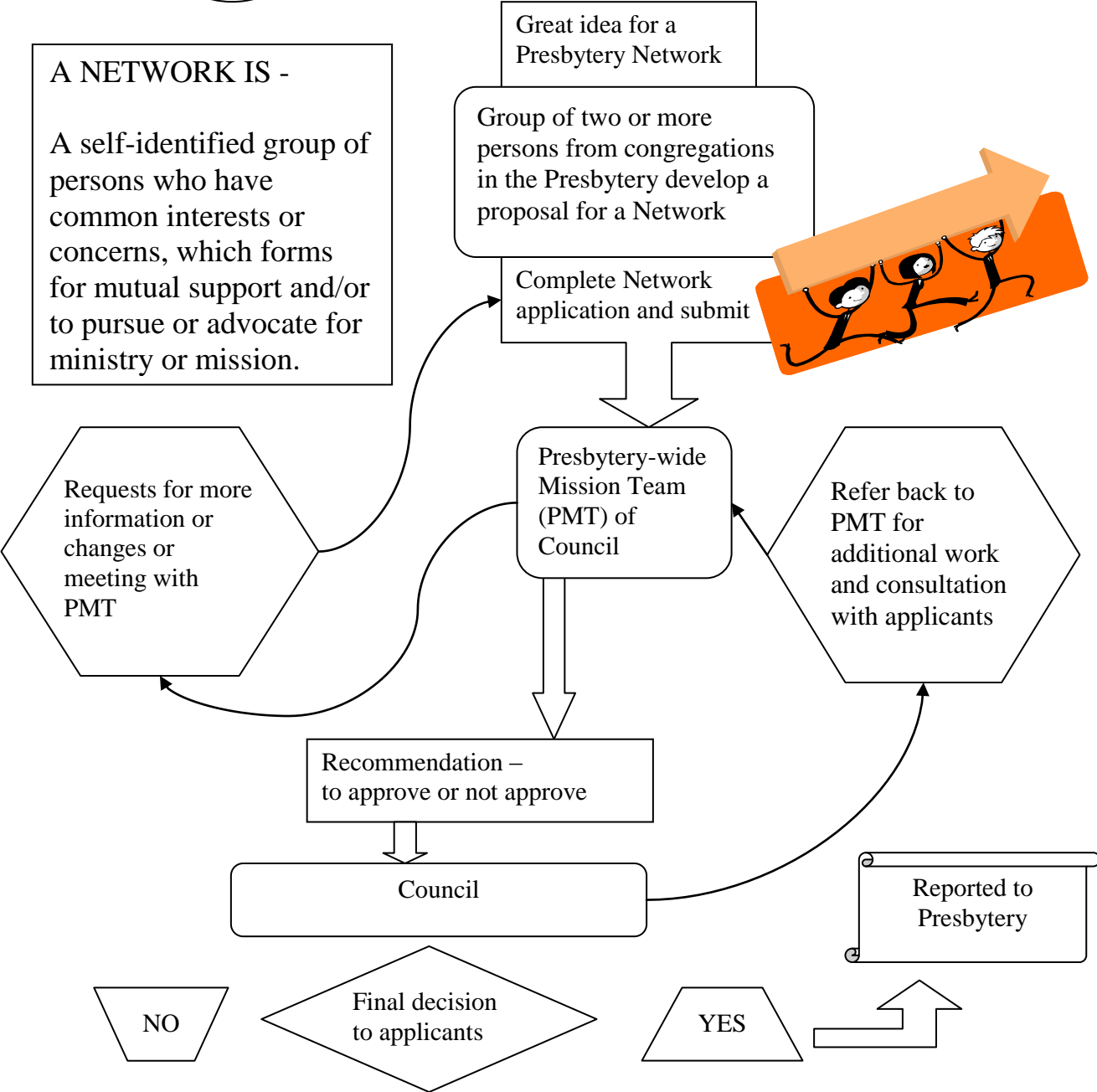
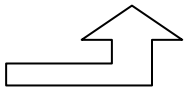
Council

Reported to Presbytery

NO

Final decision to applicants

YES



Presbytery Networks  
Application Process

Presbytery of Cincinnati  
January 16, 2008

Summary points:

1. Presbytery Networks require:
  - a. Two or more members of the Presbytery or its congregations
  - b. Application submitted to the Presbytery-wide Mission Team of Council
  - c. Willingness to participate in a review or evaluation process
2. Application may be 1) only for Endorsement or 2) Endorsement and Funding
  - a. Endorsement may involve forms of Presbytery support such as:
    - i. Communication through the Presbytery website, mailings, etc.
    - ii. Docketed time at Presbytery meetings for communication
    - iii. Meeting space at the Presbytery Office
    - iv. Presbytery staff support
  - b. Funding will be from the Partnerships Projects line item of the annual budget approved by the Presbytery
3. Decisions will be made:
  - a. According to the stated “Criteria for Encouraging, Endorsing, and Funding Presbytery Mission”
  - b. Based on annual mission priorities established by the Presbytery
  - c. With a clear, open process to continue “Building Trust” – one of the Strategic Directions in our Shared Practical Vision (January, 2005)
4. Accountability
  - a. Networks will be accountable to the Presbytery through the Council by regular reviews conducted at least annually
  - b. Council will be accountable to the Presbytery through reports at each Presbytery meeting
5. Communication
  - a. Endorsement and funding will be reported to the Presbytery
  - b. Networks will have opportunities to publicize throughout the Presbytery their objectives, progress, and needs

Attachments:

Criteria

Application form

[January 16, 2008, rev March 25, 2008]

## CRITERIA FOR ENCOURAGING, ENDORSING & FUNDING PRESBYTERY MISSION

The goal of the Council of Presbytery, in its role of encouraging, endorsing and enabling Presbytery Mission is to have a culture of saying “Yes” to mission initiatives that arise from congregations, congregational partnerships and networks. Council will be seeking to endorse and fund mission initiatives which:

- 1) Are consistent with Presbytery's primary mission which is the mission of our congregations, expressed generally in “The Great Ends of the Church” (G-1.0200):
  - the shelter, nurture and spiritual fellowship of the children of God
  - the maintenance of divine worship;
  - the preservation of the truth;
  - the promotion of social righteousness;
  - the exhibition of the Kingdom of Heaven to the world.
- 2) Enable us to live into being a “community made up of growing, vital congregations” as expressed in our Shared Practical Vision.
- 3) Align with our Strategic Directions of building trust together, growing connections between congregations, and cultivating healthy and effective leaders.
- 4) Advance the mission priorities established annually by the whole Presbytery.
- 5) Involve representatives from two or more Presbytery of Cincinnati congregations.
- 6) Are appropriately inclusive of persons without regard to race, age, gender, ethnic origin, marital status, or disabilities (recognizing that some networks may be formed around particular categories, such as “clergy women” or “Christian educators,” etc.
- 7) Have committed leadership and a clearly stated purpose and goals.
- 8) Are willing to be accountable to the Presbytery through annual communication and evaluation.
- 9) Are within the capacity of the Presbytery to support through its resources, including (but not limited to) funding.

**CONGREGATIONAL PARTNERSHIP AND NETWORK ENDORSEMENT**

Presbytery of Cincinnati  
1323 Myrtle Ave., Cincinnati, OH 45206-4850  
513-221-4850 1-888-221-4238

Partnership/Network Name: \_\_\_\_\_ Date: \_\_\_\_\_

*What kind of mission initiative will this be?*

Congregational Mission Partnership (two or more congregations of the Presbytery & session approval)  
List congregations and dates of session approval.

Network (two or more members of the Presbytery or its congregations)

*Is this proposal for:*

Endorsement only

Both endorsement & funding

Please use separate sheet if needed:

1) Please list the primary contact(s), all who are involved in the group, and the congregations they represent.

2) Stated the mission of your Partnership or Network.

3) How does this Partnership/Network advance the mission priorities for the year, as established by the Presbytery? 2010-12 priorities: 1) congregations in transition, 2) leadership development, 3) local mission, and 4) nurture of church professionals

4) What are the specific objectives of the Partnership/Network for this coming year?

*If this request includes funding, please complete the questions on the back of this form.*

5) Describe in outline form the plan for carrying out this mission initiative.

6) Attach a detailed budget for this Partnership/Network. Include sources and amounts of income applicable to the project, and specific projected expenditures.

7) What is the exact amount you are requesting from the Presbytery of Cincinnati? \_\_\_\_\_  
Is there another available source of funding? \_\_\_\_\_  
If so, how much do you expect to receive from them? \_\_\_\_\_

*Please sign:*

Preparer of the Application: \_\_\_\_\_ Date: \_\_\_\_\_

Partnership/Network Leader: \_\_\_\_\_ Date: \_\_\_\_\_